

# Nemic-Lambda EWS50-24

Single Output Power Supply



© Artisan Technology Group

**\$345.00**

**In Stock**

**Qty Available: 1**

**Used and in Excellent Condition**

**Open Web Page**

<https://www.artisanng.com/63432-1>



**ARTISAN<sup>®</sup>**  
TECHNOLOGY GROUP

Your **definitive** source  
for quality pre-owned  
equipment.

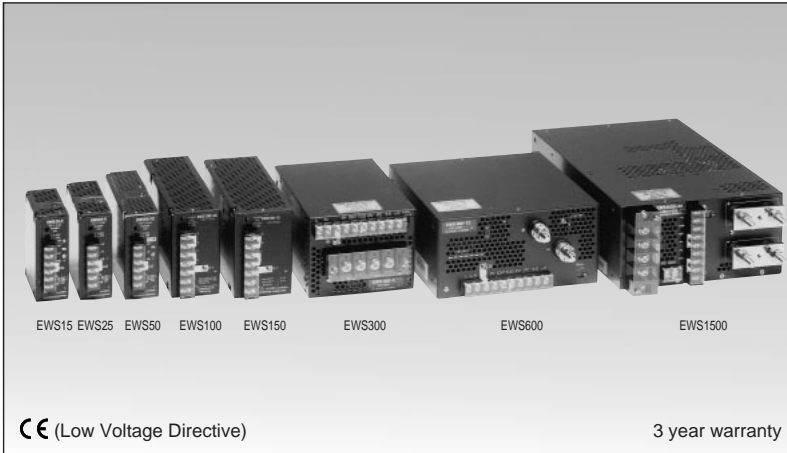
**Artisan Technology Group**

(217) 352-9330 | [sales@artisanng.com](mailto:sales@artisanng.com) | [artisanng.com](http://artisanng.com)

All trademarks, brandnames, and brands appearing herein are the property of their respective owners.

- Critical and expedited services
- In stock / Ready-to-ship
- We buy your excess, underutilized, and idle equipment
- Full-service, independent repair center

Artisan Scientific Corporation dba Artisan Technology Group is not an affiliate, representative, or authorized distributor for any manufacturer listed herein.



### Model name

# EWS 15-5

Name of series      Output power  
Nominal output voltage

### Features

- CE marking (Low Voltage Directive)
- 74 models, 15 ~ 1500W
- Wide input voltage range  
EWS15, 25, 50: 85 ~ 265VAC universal input  
EWS100, 150, 300, 600: 100/200VAC auto-selectable  
EWS1500: 100/200VAC user-selectable
- Wide output voltage range: ±20% (EWS300, 600, 1500)
- Output voltage programmable (EWS1500):  
0V to nominal output voltage by external control
- 3 year warranty

### Specifications

<b>1. Input voltage range</b>	EWS15, 25, 50: 85 ~ 265VAC (47 ~ 440Hz), DC110 ~ 330V universal input EWS100, 150, 300, 600: 85 ~ 132VAC/170 ~ 265VAC (47 ~ 63Hz) auto-selectable EWS1500: 85 ~ 132VAC/170 ~ 265VAC (47 ~ 63Hz) user-selectable
<b>2. Output voltage range</b>	EWS15, 25, 50, 100, 150: ±10% EWS300, 600, 1500: ±20% (2V: -10 ~ +20%) EWS1500: ±20% or 0V to nominal output voltage × 120% by external control
<b>3. Cooling</b>	EWS15, 25, 50, 100, 150: Convection cooling, EWS300, 600, 1500: Forced air cooling by internal fan
<b>4. Operating ambient temperature (Standard mounting)</b>	-10 ~ +60°C (Output derating) EWS15, 25, 50/-10°C: 70%, 0 ~ +50°C: 100%, +60°C: 50% EWS100, 150/-10°C: 72%, 0 ~ +40°C: 120%, +50°C: 100%, +60°C: 48% EWS300, 600, 1500/-10°C: 70%, 0 ~ +50°C: 100%, +60°C: 70%
<b>5. Withstand voltage</b>	Input-output: 3.75kVAC, Input-FG: 2.5kVAC, Output-FG: 500VAC for 1 min.
<b>6. Safety standard</b>	Approved by UL1950 , CSA950  (EWS300: approved by CSA234) and EN60950
<b>7. EMI</b>	Conforms to VCCI-class A and FCC class A
<b>8. Functions</b>	Over voltage protection, Over current protection, Remote sensing (EWS100 ~ 1500), Remote on/off control (EWS300 ~ 1500), Output current balancing (EWS300 ~ 1500)

### Product lineup

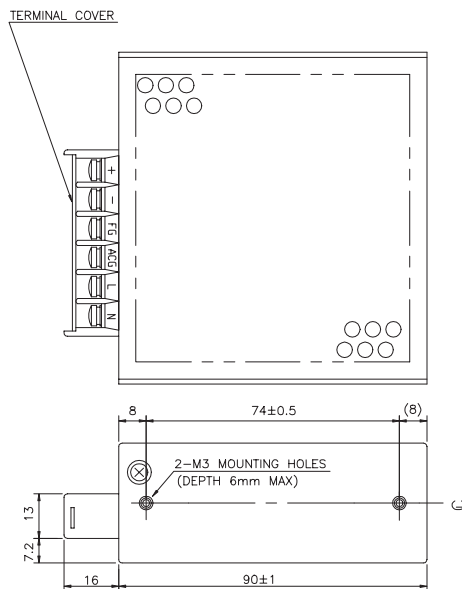
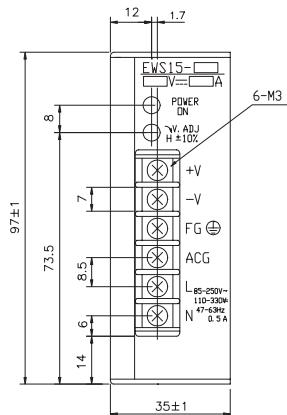
Model name		Nominal output voltage	Max. output current	Max. output power	UL	CSA	EN
EWS15	EWS15-5	5V	3.0A	15W	○	○	○
	EWS15-6	6V	2.5A	15W	○	○	○
	EWS15-9	9V	1.7A	15.3W	○	○	○
	EWS15-12	12V	1.4A	16.8W	○	○	○
	EWS15-15	15V	1.1A	16.5W	○	○	○
	EWS15-18	18V	0.9A	16.2W	○	○	○
	EWS15-24	24V	0.7A	16.8W	○	○	○
	EWS15-28	28V	0.6A	16.8W	○	○	○
EWS25	EWS25-5	5V	5.0A	25.0W	○	○	○
	EWS25-6	6V	4.2A	25.2W	○	○	○
	EWS25-9	9V	2.8A	25.2W	○	○	○
	EWS25-12	12V	2.2A	26.4W	○	○	○
	EWS25-15	15V	1.8A	27W	○	○	○
	EWS25-18	18V	1.5A	27W	○	○	○
	EWS25-24	24V	1.2A	28.8W	○	○	○
	EWS25-28	28V	1.0A	28W	○	○	○
EWS50	EWS50-5	5V	10.0A	50.0W	○	○	○
	EWS50-6	6V	8.4A	50.4W	○	○	○
	EWS50-9	9V	5.6A	50.4W	○	○	○
	EWS50-12	12V	4.4A	52.8W	○	○	○
	EWS50-15	15V	3.6A	54.0W	○	○	○
	EWS50-18	18V	3.2A	57.6W	○	○	○
	EWS50-24	24V	2.4A	57.6W	○	○	○
	EWS50-28	28V	2.0A	56.0W	○	○	○
EWS100	EWS100-5	5V	20A	100W	○	○	○
	EWS100-6	6V	16.7A	100.2W	○	○	○
	EWS100-9	9V	11.2A	100.8W	○	○	○
	EWS100-12	12V	8.4A	100.8W	○	○	○
	EWS100-15	15V	6.7A	100.5W	○	○	○
	EWS100-18	18V	5.6A	100.8W	○	○	○
	EWS100-24	24V	4.2A	100.8W	○	○	○
	EWS100-28	28V	3.6A	100.8W	○	○	○

Model name		Nominal output voltage	Max. output current	Max. output power	UL	CSA	EN
EWS150	EWS150-5	5V	30A	150W	○	○	○
	EWS150-6	6V	25A	150W	○	○	○
	EWS150-9	9V	16.7A	150.3W	○	○	○
	EWS150-12	12V	12.5A	150W	○	○	○
	EWS150-15	15V	10A	150W	○	○	○
	EWS150-18	18V	8.4A	151.2W	○	○	○
	EWS150-24	24V	6.3A	151.2W	○	○	○
	EWS150-28	28V	5.4A	151.2W	○	○	○
EWS300	EWS300-2	2V	60A	120W	○	△	△
	EWS300-5	5V	60A	300W	○	○	○
	EWS300-6	6V	50A	300W	○	△	△
	EWS300-9	9V	34A	306W	○	△	△
	EWS300-12	12V	27A	324W	○	○	○
	EWS300-15	15V	22A	330W	○	○	○
	EWS300-18	18V	18A	324W	○	○	○
	EWS300-24	24V	14A	336W	○	○	○
EWS600	EWS600-2	2V	120A	240W	○	○	△
	EWS600-5	5V	120A	600W	○	○	○
	EWS600-6	6V	100A	600W	○	○	△
	EWS600-9	9V	68A	612W	○	○	△
	EWS600-12	12V	53A	636W	○	○	○
	EWS600-15	15V	43A	645W	○	○	○
	EWS600-18	18V	35A	630W	○	○	△
	EWS600-24	24V	27A	648W	○	○	○
EWS1500	EWS1500-2	2V	300A	600W	○	○	○
	EWS1500-3.3	3.3V	300A	990W	○	○	○
	EWS1500-5	5V	300A	1500W	○	○	○
	EWS1500-10	10V	150A	1500W	○	○	○
	EWS1500-12	12V	125A	1500W	○	○	○
	EWS1500-15	15V	100A	1500W	○	○	○
	EWS1500-24	24V	63A	1512W	○	○	○
	EWS1500-48	48V	32A	1536W	○	○	○

● Request customer specification for further details of specifications, outline, characteristics, etc.  
● Read the instruction manual before usage.  
● Contact us about delivery before ordering.

○ : Safety standard approved  
△ : Conforms to safety standard

## EWS15



● Recommended Noise Filter

MAW-1201-22

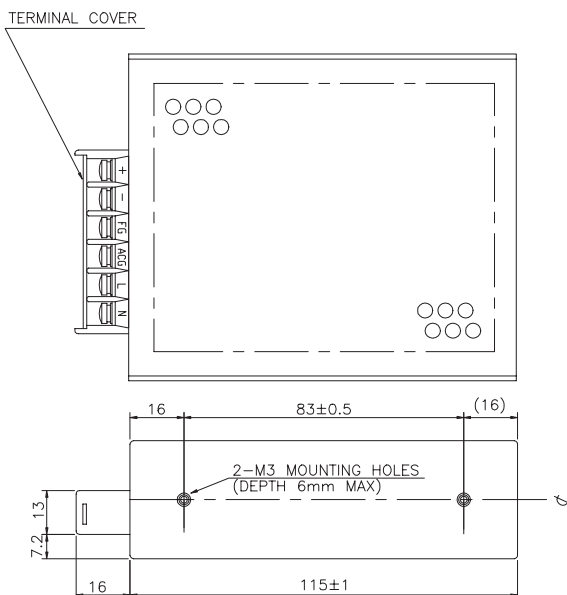
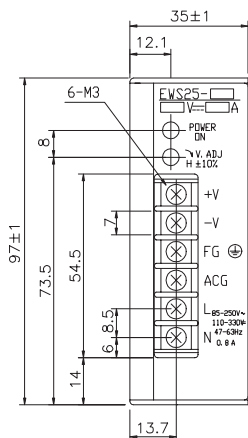


GO!!  
P134

● Recommended Power Supply Fixture P198

(Unit: mm)

## EWS25



● Recommended Noise Filter

MAW-1201-22

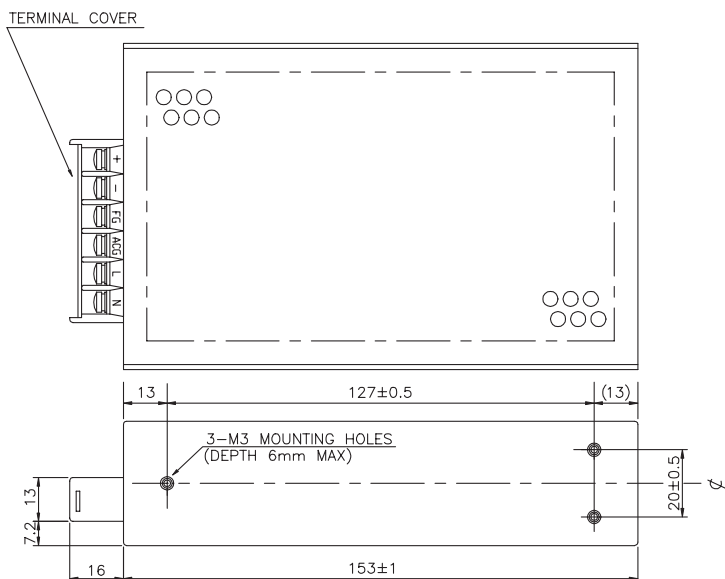
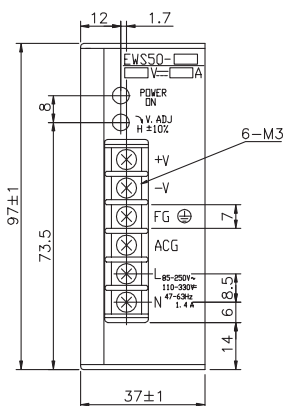


GO!!  
P134

● Recommended Power Supply Fixture P198

(Unit: mm)

## EWS50



● Recommended Noise Filter

MAW-1202-22



GO!!  
P134

● Recommended Power Supply Fixture P198

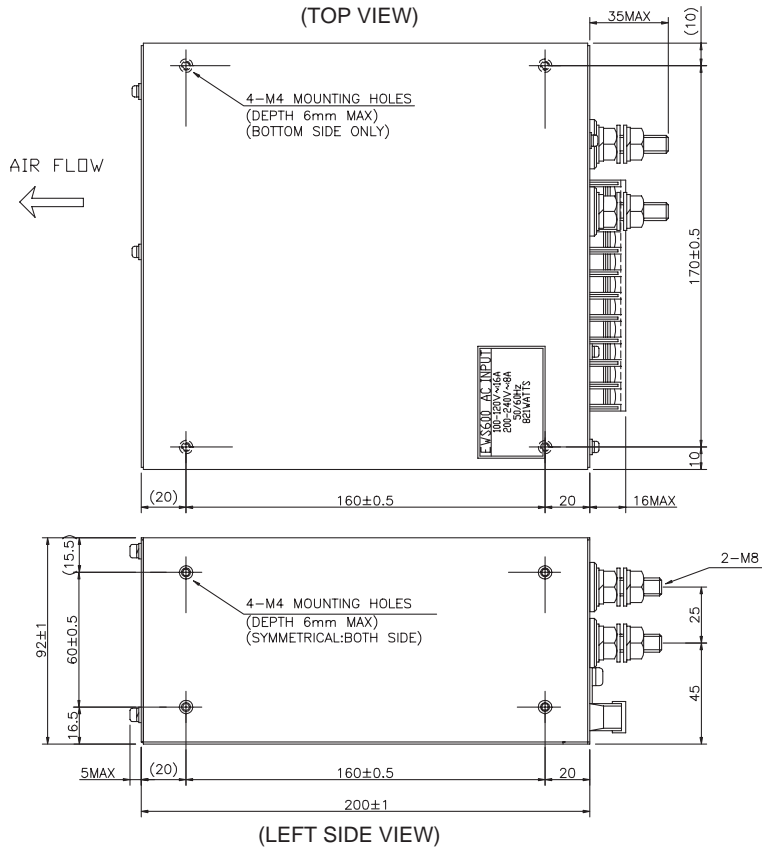
(Unit: mm)



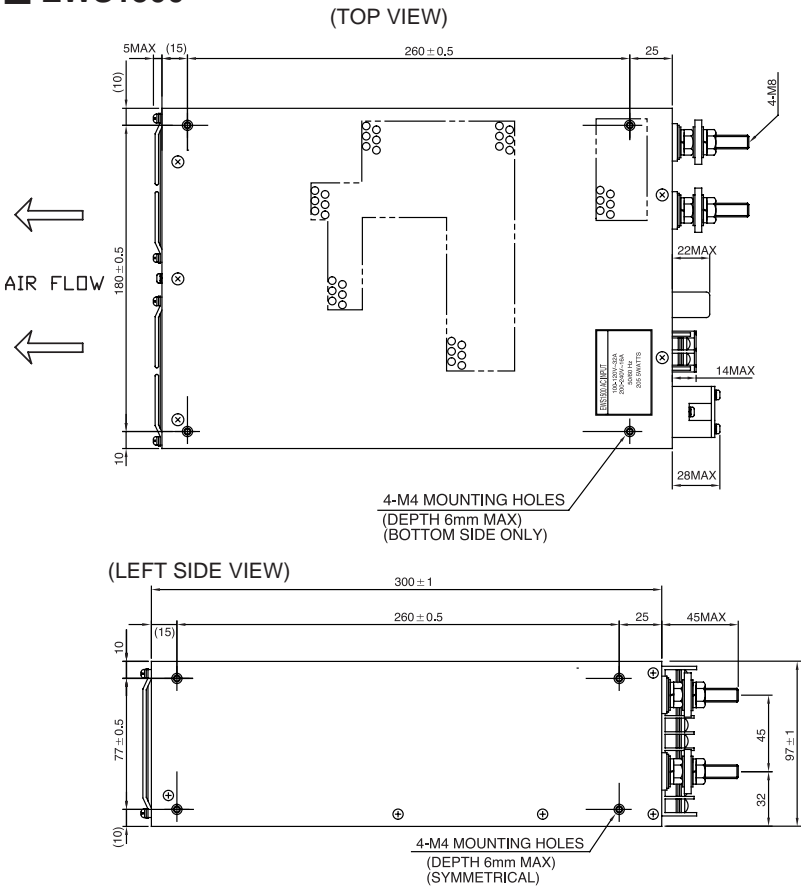
# EWS-SERIES

Unit Type Power Supply

## ■ EWS600



## ■ EWS1500



# Mouser Electronics

Authorized Distributor

Click to View Pricing, Inventory, Delivery & Lifecycle Information:

## TDK:

[EWS10018](#) [EWS150-15](#) [EWS150-5](#) [EWS150-6](#) [EWS15-6](#) [EWS25-15](#) [EWS25-28](#) [EWS600-15](#) [EWS600-2](#)  
[EWS15-28](#)

## TDK-Lambda:

[EWS10012](#) [EWS10015](#) [EWS10028](#) [EWS10048](#) [EWS1005](#) [EWS1006](#) [EWS1009](#) [EWS1500-24](#) [EWS150-12](#)  
[EWS150-24](#) [EWS150-28](#) [EWS150-48](#) [EWS15-12](#) [EWS15-15](#) [EWS15-24](#) [EWS15-48](#) [EWS15-5](#) [EWS25-12](#)  
[EWS25-24](#) [EWS25-48](#) [EWS25-5](#) [EWS25-6](#) [EWS300-12](#) [EWS300-15](#) [EWS300-24](#) [EWS300-28](#) [EWS300-48](#)  
[EWS300-5](#) [EWS300-6](#) [EWS50-15](#) [EWS50-24](#) [EWS50-28](#) [EWS50-48](#) [EWS50-5](#) [EWS50-6](#) [EWS600-12](#) [EWS600-](#)  
[24](#) [EWS600-28](#) [EWS600-48](#) [EWS600-5](#) [EWS600-6](#) [EWS50-12](#) [EWS10024](#)

# Artisan Technology Group is an independent supplier of quality pre-owned equipment

## Gold-standard solutions

Extend the life of your critical industrial, commercial, and military systems with our superior service and support.

## We buy equipment

Planning to upgrade your current equipment? Have surplus equipment taking up shelf space? We'll give it a new home.

## Learn more!

Visit us at [artisanng.com](http://artisanng.com) for more info on price quotes, drivers, technical specifications, manuals, and documentation.

Artisan Scientific Corporation dba Artisan Technology Group is not an affiliate, representative, or authorized distributor for any manufacturer listed herein.

We're here to make your life easier. How can we help you today?

(217) 352-9330 | [sales@artisanng.com](mailto:sales@artisanng.com) | [artisanng.com](http://artisanng.com)

