

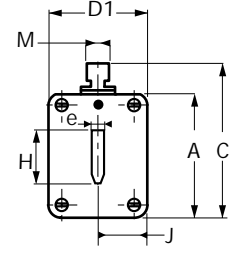
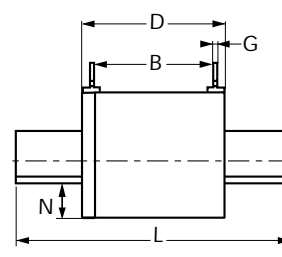
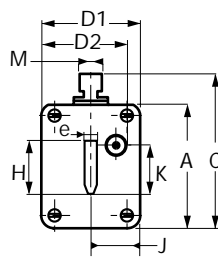
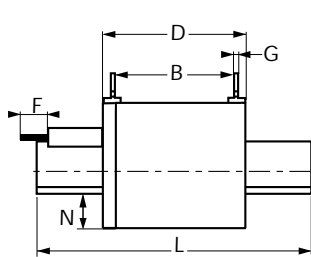
# General Purpose IEC Fuses



**NH Fuses (Plain Blades)**  
**aM Plastic body with/without French striker**  
**aM 500V Size 2 and 3**

from 125 to 630 A

- BLADE-STYLE FUSES: WITH BLOWN FUSE INDICATOR OR TRIP-INDICATOR
- COMPLYING WITH IEC 269.1 AND 2.1, NF EN 60269.1 & 2 NF C 63210 - 63211 AND DIN 43620
- DIMENSIONS:



With trip-indicator

With blown fuse indicator

Datasheet.Live

Size	A	B	C	D	D1	D2*	F*	G	H	J	K	L	M	N	e	Wgt.
2	60	64	72	74	50	50	14	3	28	19	14,5	150	10	14,5	6	590g
3	75	61	88	75	70	64	14	2,5	36	23	14,5	150	10	18	6	850g

\* For fuses with trip-indicator

Size	Voltage rating (VAC)	Current rating I <sub>N</sub> (A)	Watts loss (W)	With blown fuse indicator			With trip-indicator		
				Designation	Ref. Number	Catalog Number	Designation	Ref. Number	Catalog Number
2	500	125	8,5	aM 2 /125	P095210	NH2AM50V125-3	aM 2 /125 P	Z095196	NH2AM50V125-4
		160	11,5	aM 2 /160	Q095211	NH2AM50V160-3	aM 2 /160 P	S095213	NH2AM50V160-4
		200	13,5	aM 2 /200	R095212	NH2AM50V200-3	aM 2 /200 P	F095340	NH2AM50V200-4
		250	17	aM 2 /250	Q095142	NH2AM50V250-3	aM 2 /250 P	H095342	NH2AM50V250-4
		315	24	aM 2 /315	R095143	NH2AM50V315-3	aM 2 /315 P	J095343	NH2AM50V315-4
		400	28	aM 2 /400	S095144	NH2AM50V400-3	aM 2 /400 P	K095344	NH2AM50V400-4
3	500	500	34	aM 2 /500	W088523	NH2AM50V500-3	aM 2 /500 P	L095345	NH2AM50V500-4
		315	24	aM 3 /315	J095182	NH3AM50V315-3	aM 3 /315 P	Q095073	NH3AM50V315-4
		400	28	aM 3 /400	D095154	NH3AM50V400-3	aM 3 /400 P	W095354	NH3AM50V400-4
		500	34	aM 3 /500	E095155	NH3AM50V500-3	aM 3 /500 P	X095355	NH3AM50V500-4
		630	41	aM 3 /630	F095156	NH3AM50V630-3	aM 3 /630 P	Y095356	NH3AM50V630-4

Accessories: Neutral link BS2 Reference Number J097712 - BS3 Reference Number K097713  
 Pull-out handle - PMP Reference Number P215592

# General Purpose IEC Fuses



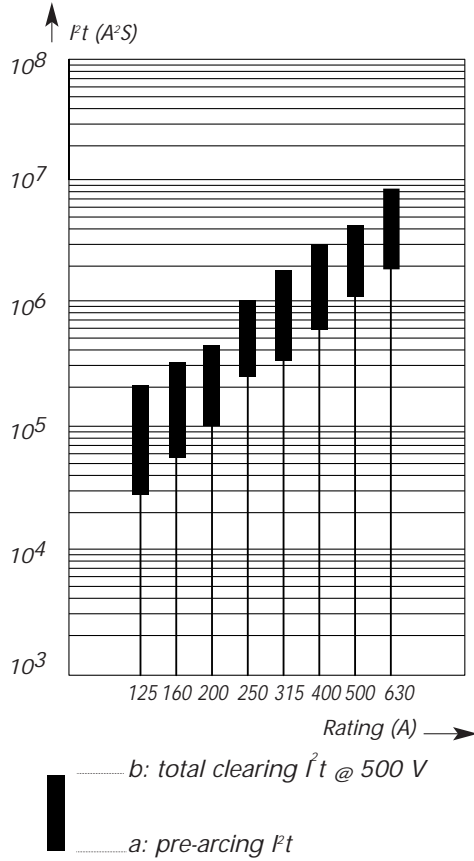
## NH Fuses (Plain Blades)

aM Plastic body with/without French striker

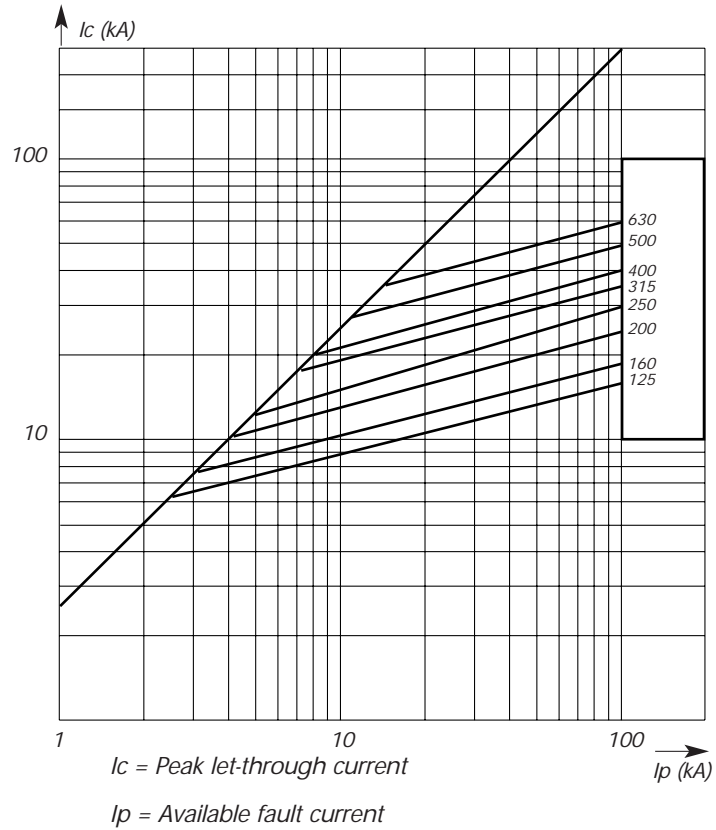
aM 500V Size 2 and 3

from 125 to 630 A

### Total Clearing $I^2t$



### Current Limitation Curves



### Time VS. Current Characteristics

